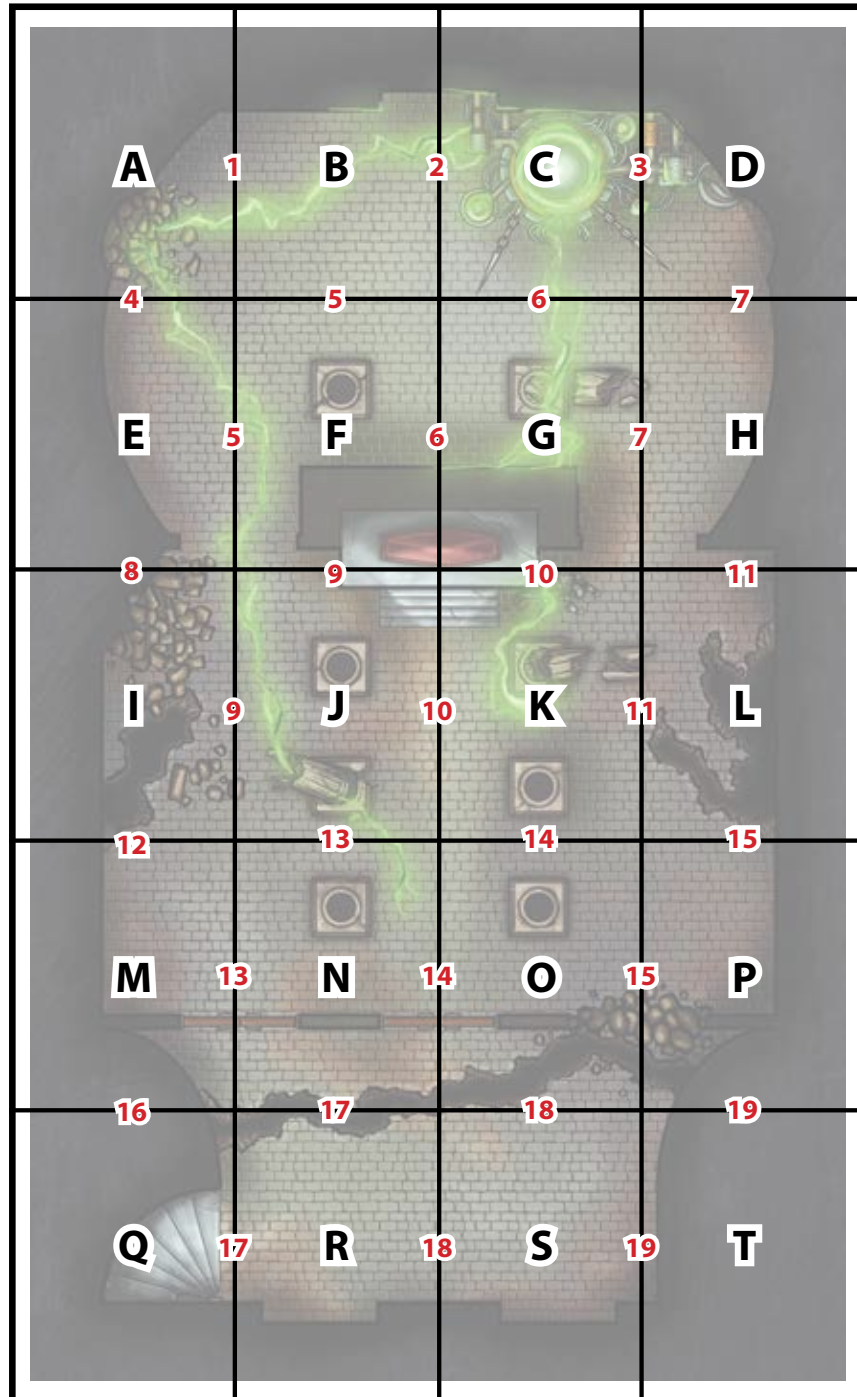


MAP ASSEMBLY INSTRUCTIONS

TEMPLE



1. Attach B to A.
2. Attach C to B.
3. Attach D to C.
4. Attach E to A.
5. Attach F to E.
6. Attach G to F.
7. Attach H to G.

8. Attach I to E.
9. Attach J to I.
10. Attach K to J.
11. Attach L to K.
12. Attach M to I.
13. Attach N to M.

14. Attach O to N.
15. Attach P to O.
16. Attach Q to M.
17. Attach R to Q.
18. Attach S to R.
19. Attach T to S.



STEP 1: ATTACH B HERE

STEP 4: ATTACH E HERE

STEP 1: CUT AWAY, THEN ATTACH TO A



STEP 2: ATTACH C HERE

STEP 5: ATTACH F HERE

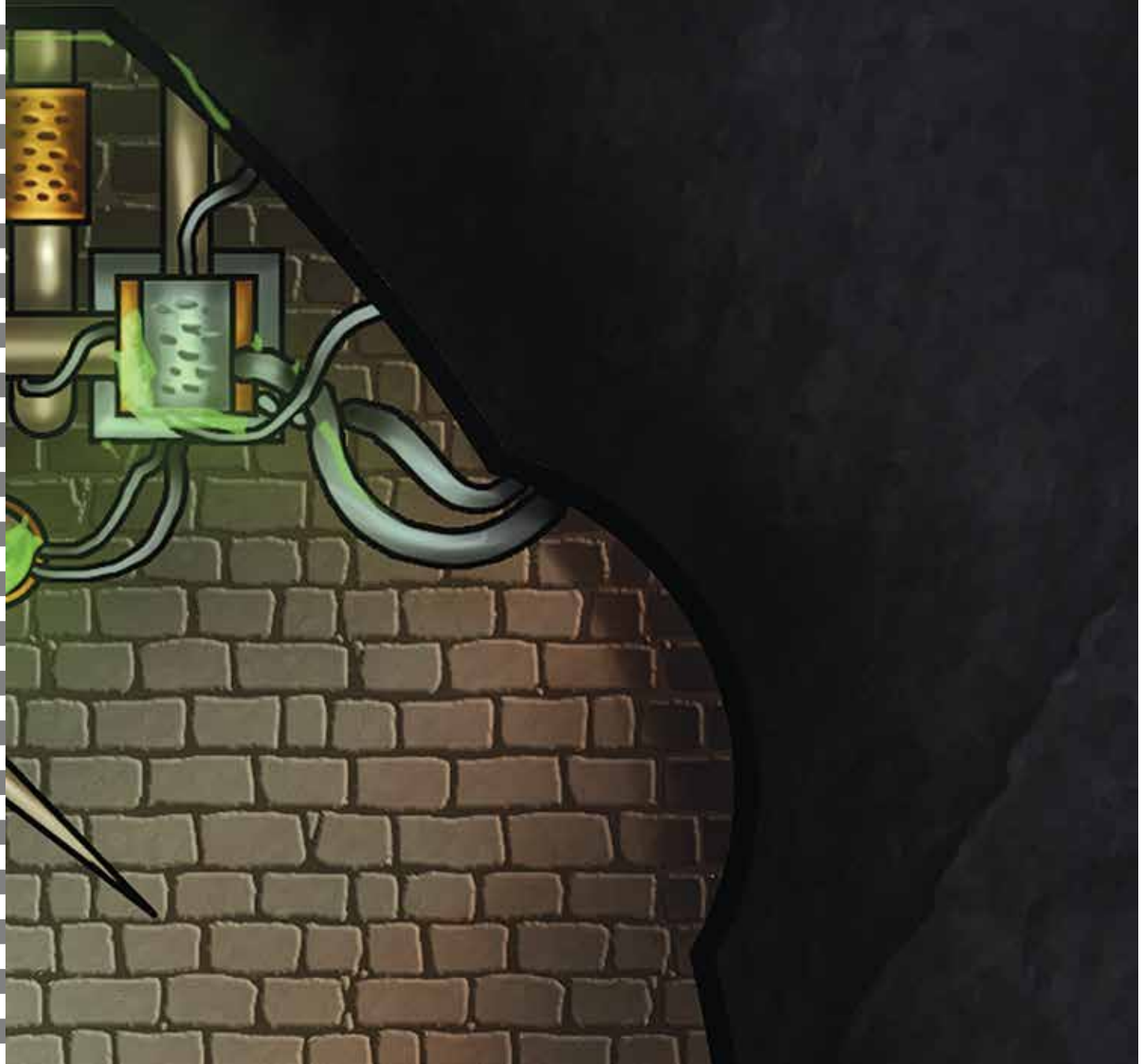
STEP 2: CUT AWAY, THEN ATTACH TO B



STEP 3: ATTACH D HERE

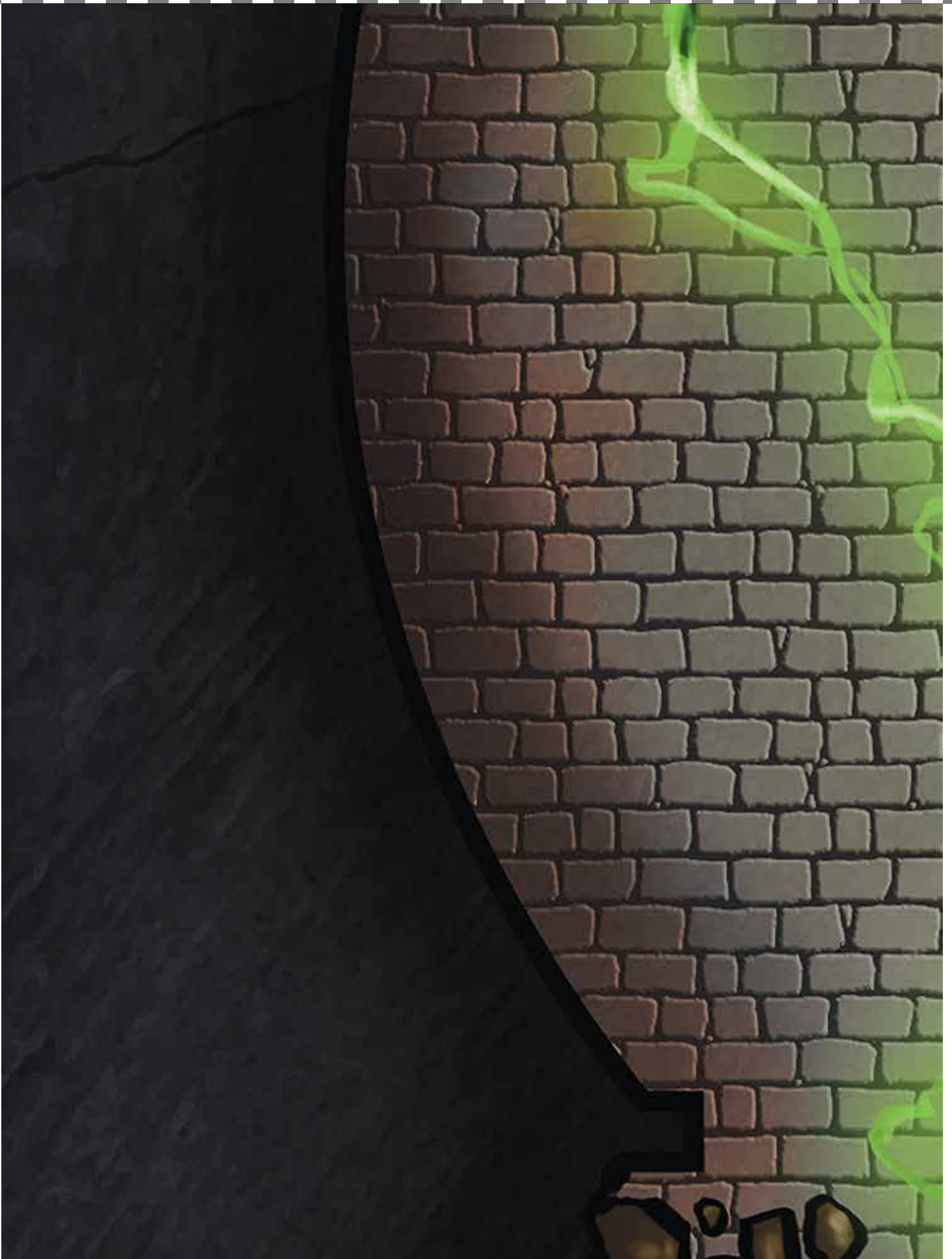
STEP 6: ATTACH G HERE

STEP 3: CUT AWAY, THEN ATTACH TO C



STEP 7: ATTACH H HERE

STEP 4: CUT AWAY, THEN ATTACH TO A



STEP 5: ATTACH F HERE

STEP 8: ATTACH I HERE

STEP 5: CUT AWAY, THEN ATTACH TO B



STEP 5: CUT AWAY, THEN ATTACH TO E

STEP 6: ATTACH G HERE

STEP 9: ATTACH J HERE

STEP 6: CUT AWAY, THEN ATTACH TO C



STEP 6: CUT AWAY, THEN ATTACH TO F

STEP 7: ATTACH H HERE

STEP 10: ATTACH K HERE

STEP 7: CUT AWAY, THEN ATTACH TO D



STEP 7: CUT AWAY, THEN ATTACH TO G

STEP 11: ATTACH L HERE



STEP 9: ATTACH J HERE

STEP 12: ATTACH M HERE

STEP 9: CUT AWAY, THEN ATTACH TO F



STEP 9: CUT AWAY, THEN ATTACH TO I

STEP 10: ATTACH K HERE

STEP 13: ATTACH N HERE

STEP 10: CUT AWAY, THEN ATTACH TO G



STEP 11: ATTACH L HERE

STEP 10: CUT AWAY, THEN ATTACH TO J

STEP 14: ATTACH O HERE

STEP 11: CUT AWAY, THEN ATTACH TO H



STEP 11: CUT AWAY, THEN ATTACH TO K

STEP 15: ATTACH P HERE

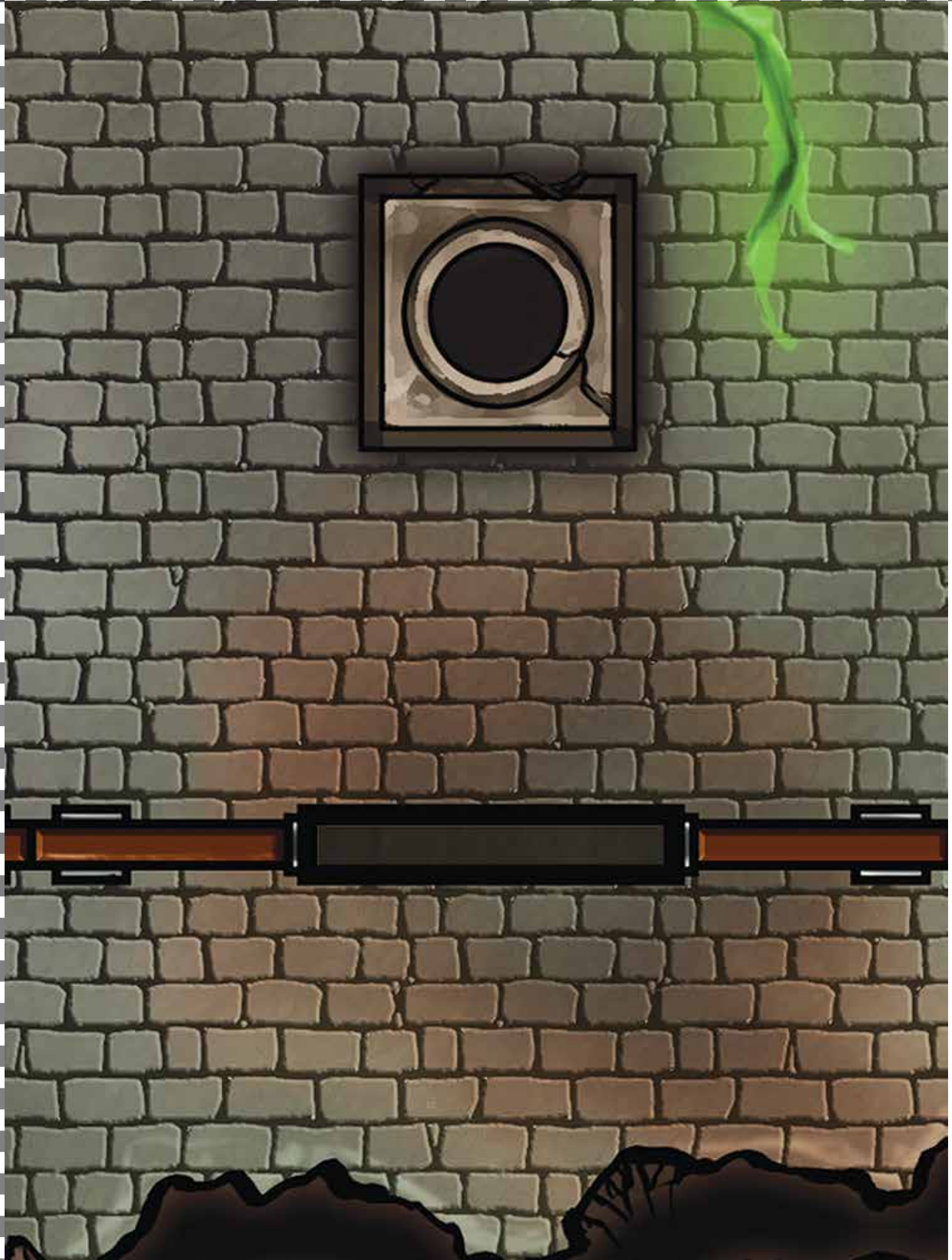
STEP 12: CUT AWAY, THEN ATTACH TO I



STEP 13: ATTACH N HERE

STEP 16: ATTACH Q HERE

STEP 13: CUT AWAY, THEN ATTACH TO J



STEP 13: CUT AWAY, THEN ATTACH TO M

STEP 14: ATTACH O HERE

STEP 17: ATTACH R HERE

STEP 14: CUT AWAY, THEN ATTACH TO K



STEP 14: CUT AWAY, THEN ATTACH TO N

STEP 15: ATTACH P HERE

STEP 18: ATTACH S HERE

STEP 15: CUT AWAY, THEN ATTACH TO 1



STEP 15: CUT AWAY, THEN ATTACH TO 0

STEP 19: ATTACH T HERE



STEP 17: ATTACH R HERE

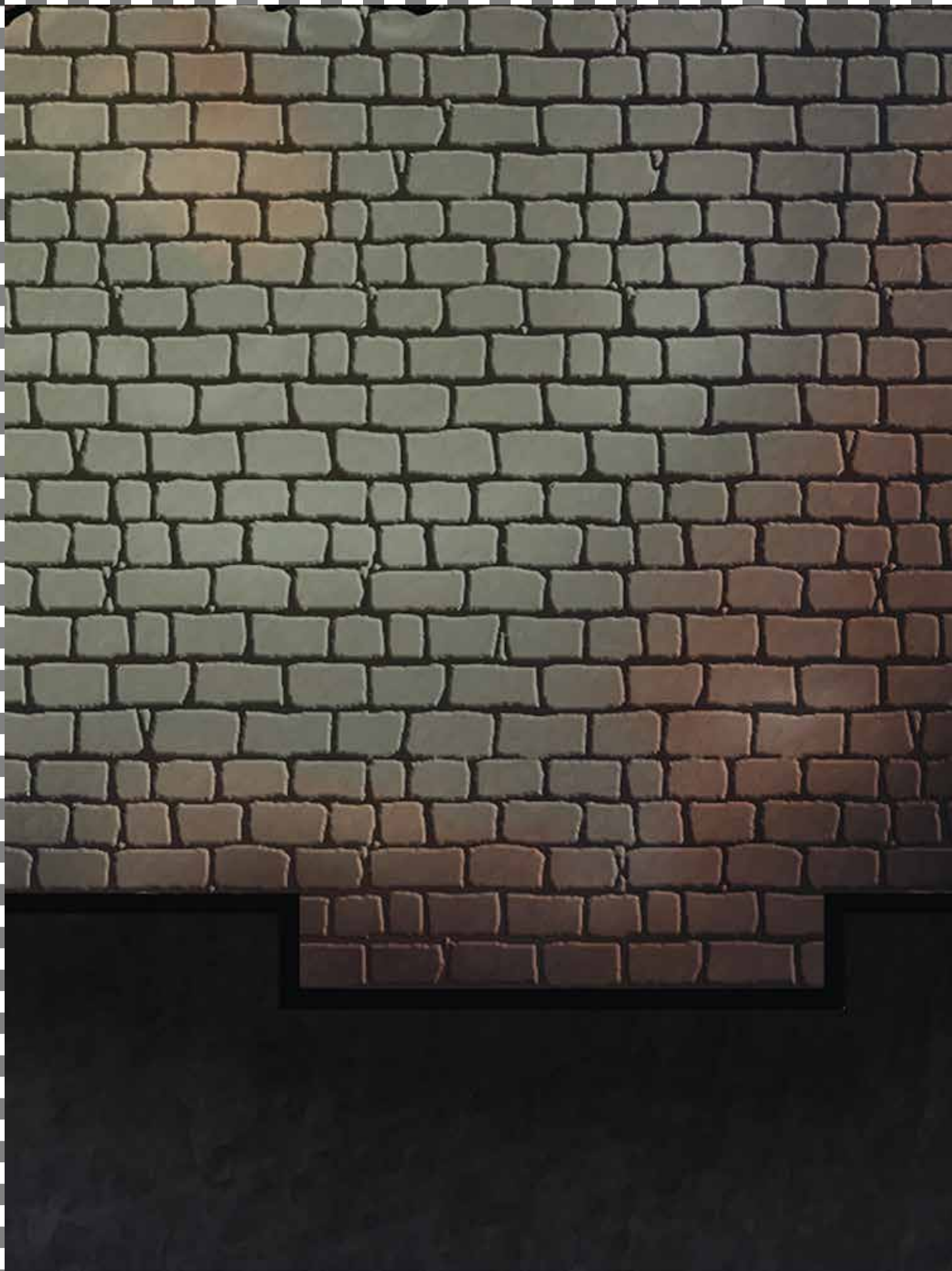
STEP 17: CUT AWAY, THEN ATTACH TO N



STEP 17: CUT AWAY, THEN ATTACH TO Q

STEP 18: ATTACH S HERE

STEP 18: CUT AWAY, THEN ATTACH TO 0



STEP 18: CUT AWAY, THEN ATTACH TO R

STEP 19: ATTACH T HERE

STEP 19: CUT AWAY, THEN ATTACH TO P



STEP 19: CUT AWAY, THEN ATTACH TO S