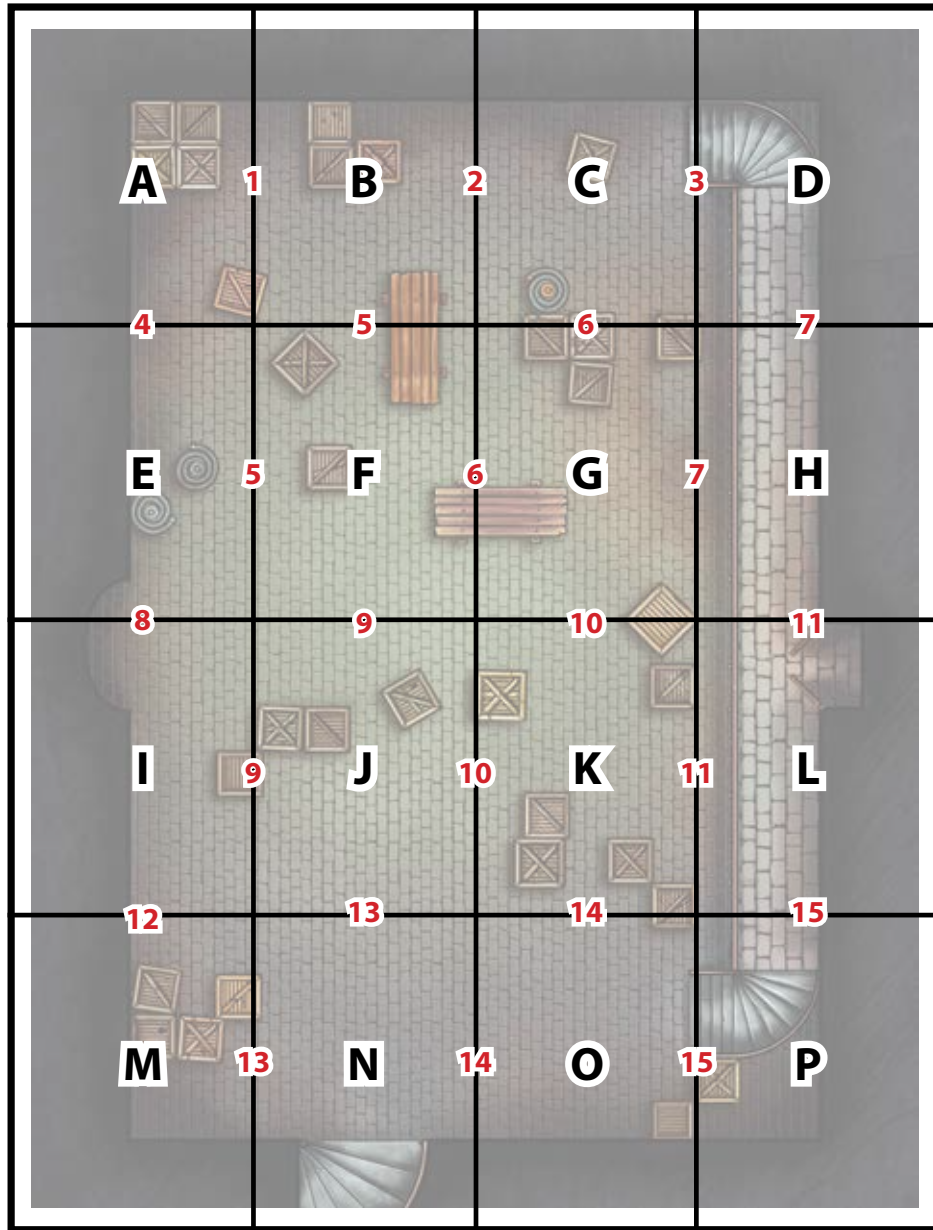


MAP ASSEMBLY INSTRUCTIONS

ANTECHAMBER



1. Attach B to A.
2. Attach C to B.
3. Attach D to C.
4. Attach E to A.
5. Attach F to E.
6. Attach G to F.
7. Attach H to G.
8. Attach I to E.
9. Attach J to I.
10. Attach K to J.
11. Attach L to K.
12. Attach M to I.
13. Attach N to M.
14. Attach O to N.
15. Attach P to O.



STEP 1: ATTACH B HERE

STEP 4: ATTACH E HERE

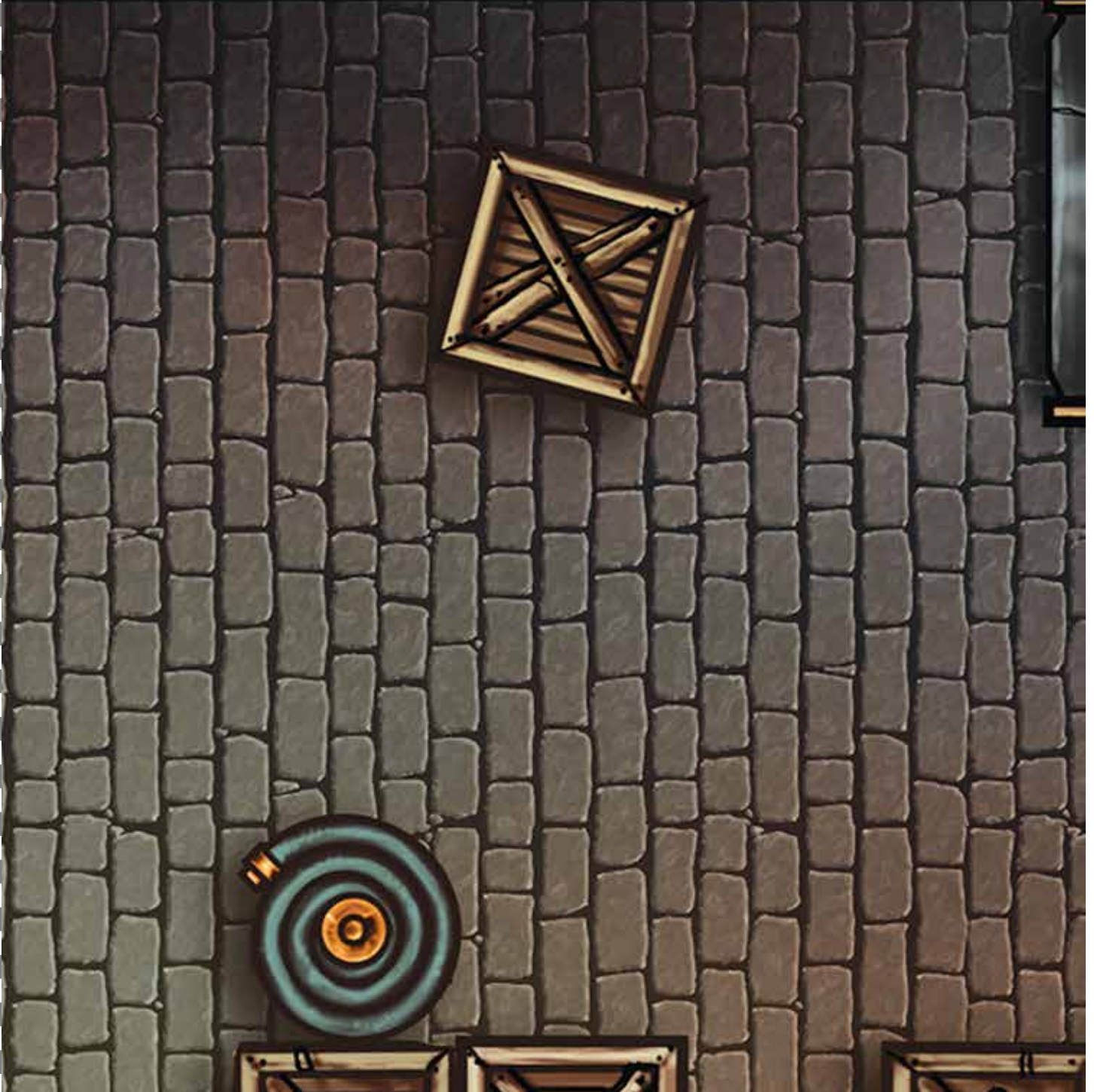
STEP 1: CUT AWAY, THEN ATTACH TO A



STEP 2: ATTACH C HERE

STEP 5: ATTACH F HERE

STEP 2: CUT AWAY, THEN ATTACH TO B



STEP 3: ATTACH D HERE

STEP 6: ATTACH G HERE

STEP 3: CUT AWAY, THEN ATTACH TO C



STEP 7: ATTACH H HERE



STEP 5: ATTACH F HERE

STEP 8: ATTACH I HERE

STEP 5: CUT AWAY, THEN ATTACH TO B



STEP 6: ATTACH G HERE

STEP 5: CUT AWAY, THEN ATTACH TO E

STEP 9: ATTACH J HERE

STEP 6: CUT AWAY, THEN ATTACH TO C



STEP 6: CUT AWAY, THEN ATTACH TO F

STEP 7: ATTACH H HERE

STEP 10: ATTACH K HERE

STEP 7: CUT AWAY, THEN ATTACH TO D



STEP 7: CUT AWAY, THEN ATTACH TO G

STEP 11: ATTACH L HERE



STEP 9: ATTACH J HERE

STEP 12: ATTACH M HERE

STEP 9: CUT AWAY, THEN ATTACH TO F

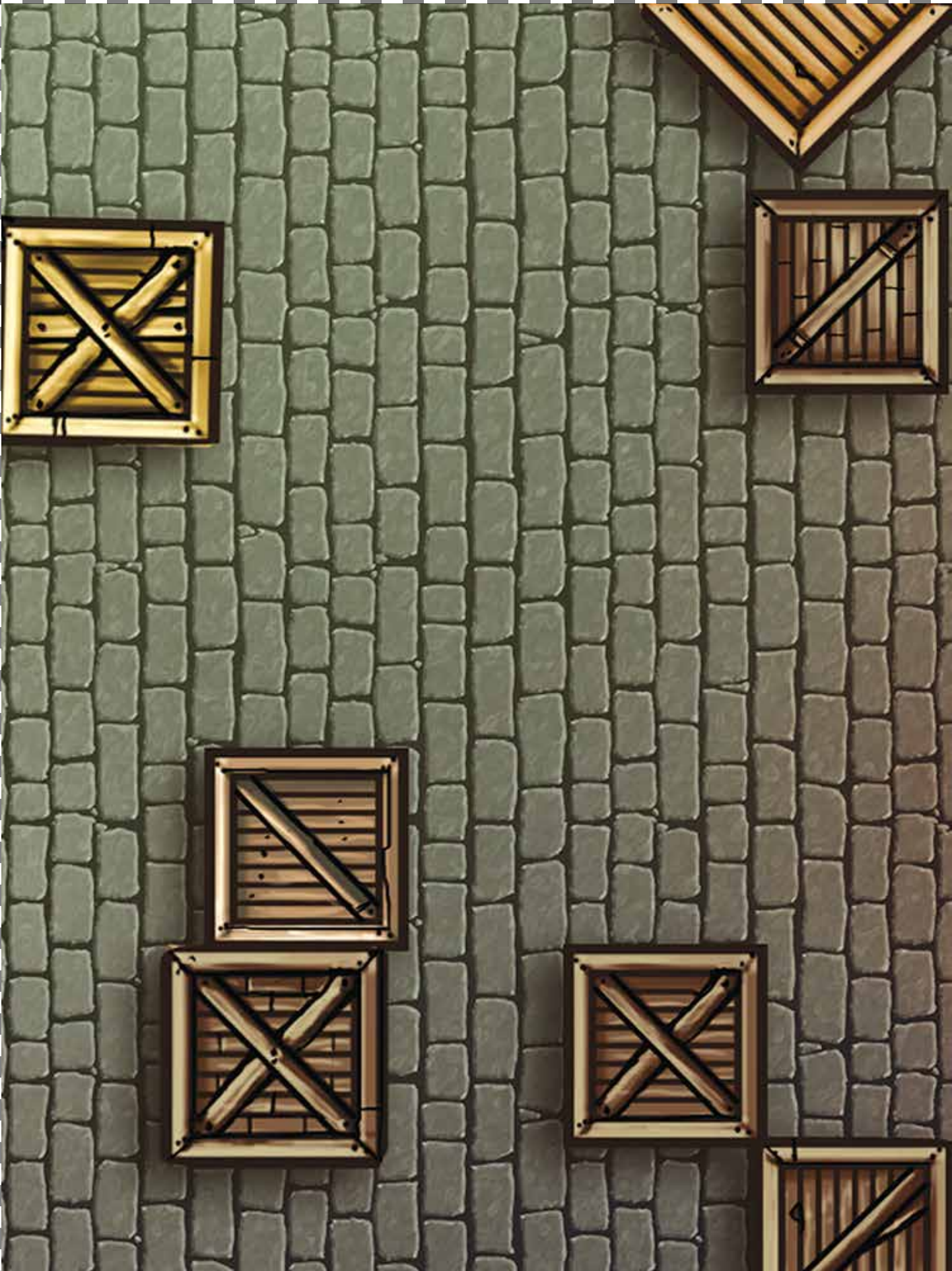


STEP 9: CUT AWAY, THEN ATTACH TO I

STEP 10: ATTACH K HERE

STEP 13: ATTACH N HERE

STEP 10: CUT AWAY, THEN ATTACH TO G

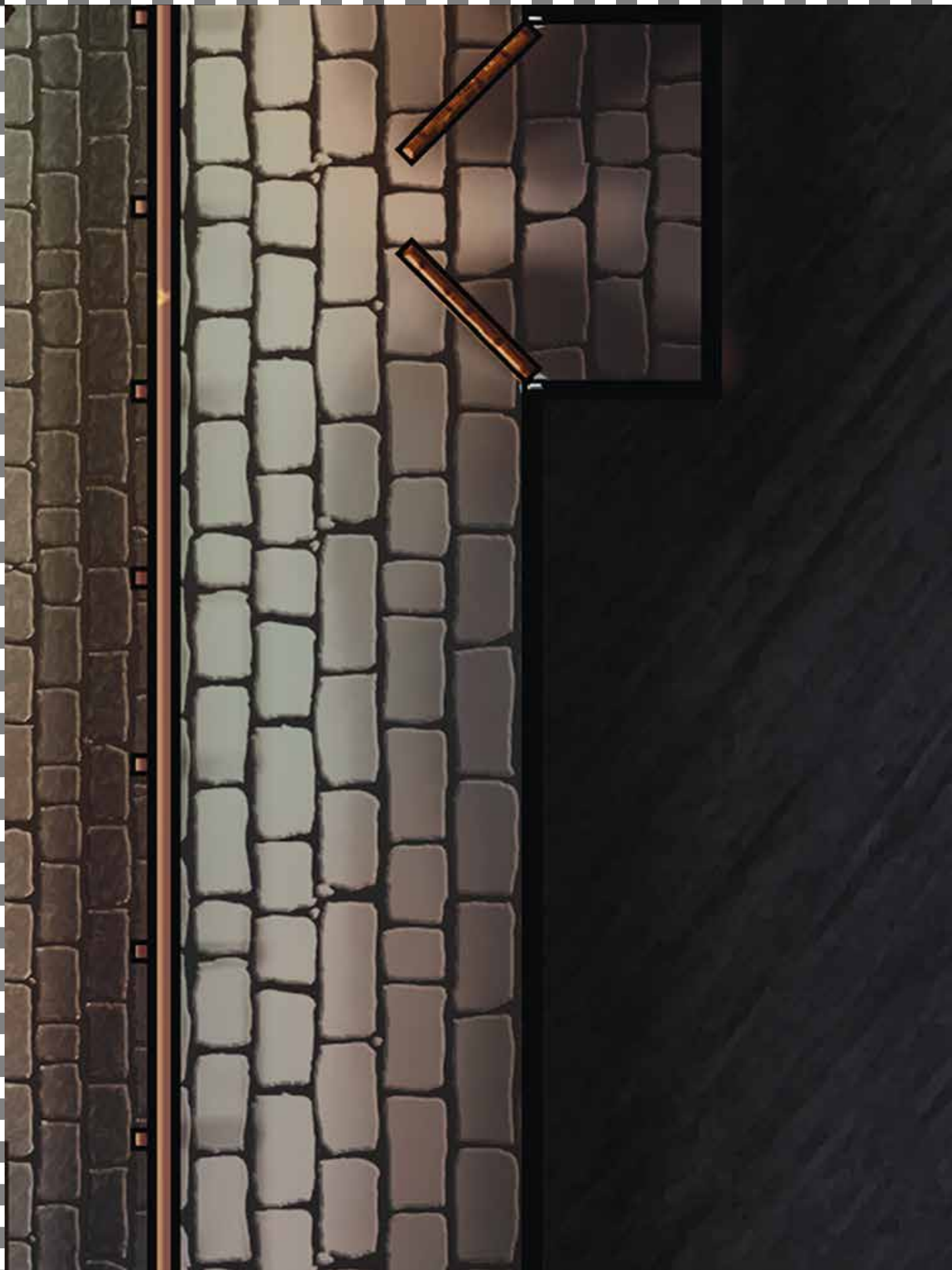


STEP 10: CUT AWAY, THEN ATTACH TO J

STEP 11: ATTACH L HERE

STEP 14: ATTACH O HERE

STEP 11: CUT AWAY, THEN ATTACH TO H



STEP 11: CUT AWAY, THEN ATTACH TO K

STEP 15: ATTACH P HERE

STEP 12: CUT AWAY, THEN ATTACH TO I



STEP 13: ATTACH N HERE

STEP 13: CUT AWAY, THEN ATTACH TO J



STEP 13: CUT AWAY, THEN ATTACH TO M

STEP 14: ATTACH 0 HERE

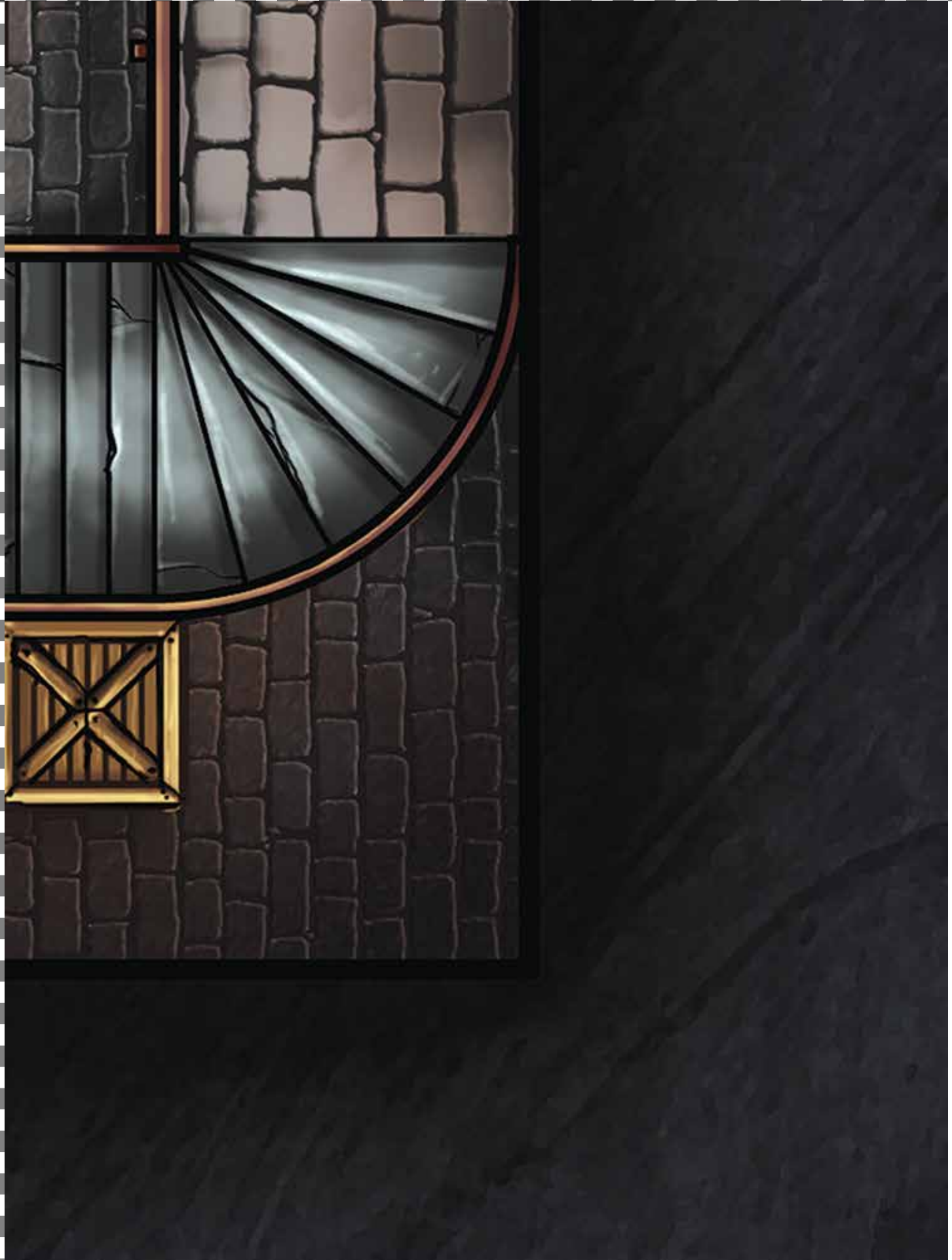
STEP 14: CUT AWAY, THEN ATTACH TO K



STEP 14: CUT AWAY, THEN ATTACH TO N

STEP 15: ATTACH P HERE

STEP 15: CUT AWAY, THEN ATTACH TO 1



STEP 15: CUT AWAY, THEN ATTACH TO 0